

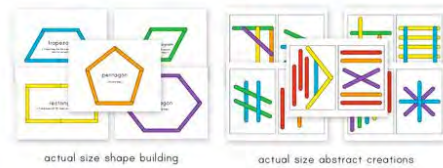


SIMPLE EVERYDAY  
MOM

Thank you so much for downloading this free resource!  
Here are some other popular printables you may be interested in. Click on any of the pictures to learn more.



Farm Animal  
Printables



Popsicle Stick  
Busy Bag



Dramatic Play  
Doctors Office



Alphabet Maze  
Worksheets

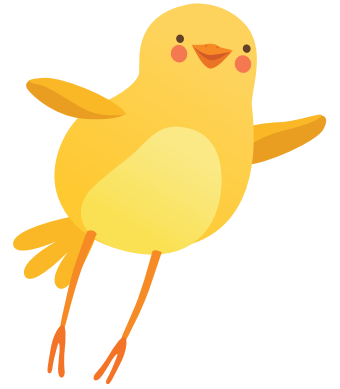


Animal Do A Dot  
Printables



Easter Do A Dot  
Printables

# Cc



Make your way through the maze by coloring or dotting all the letter Cc's.

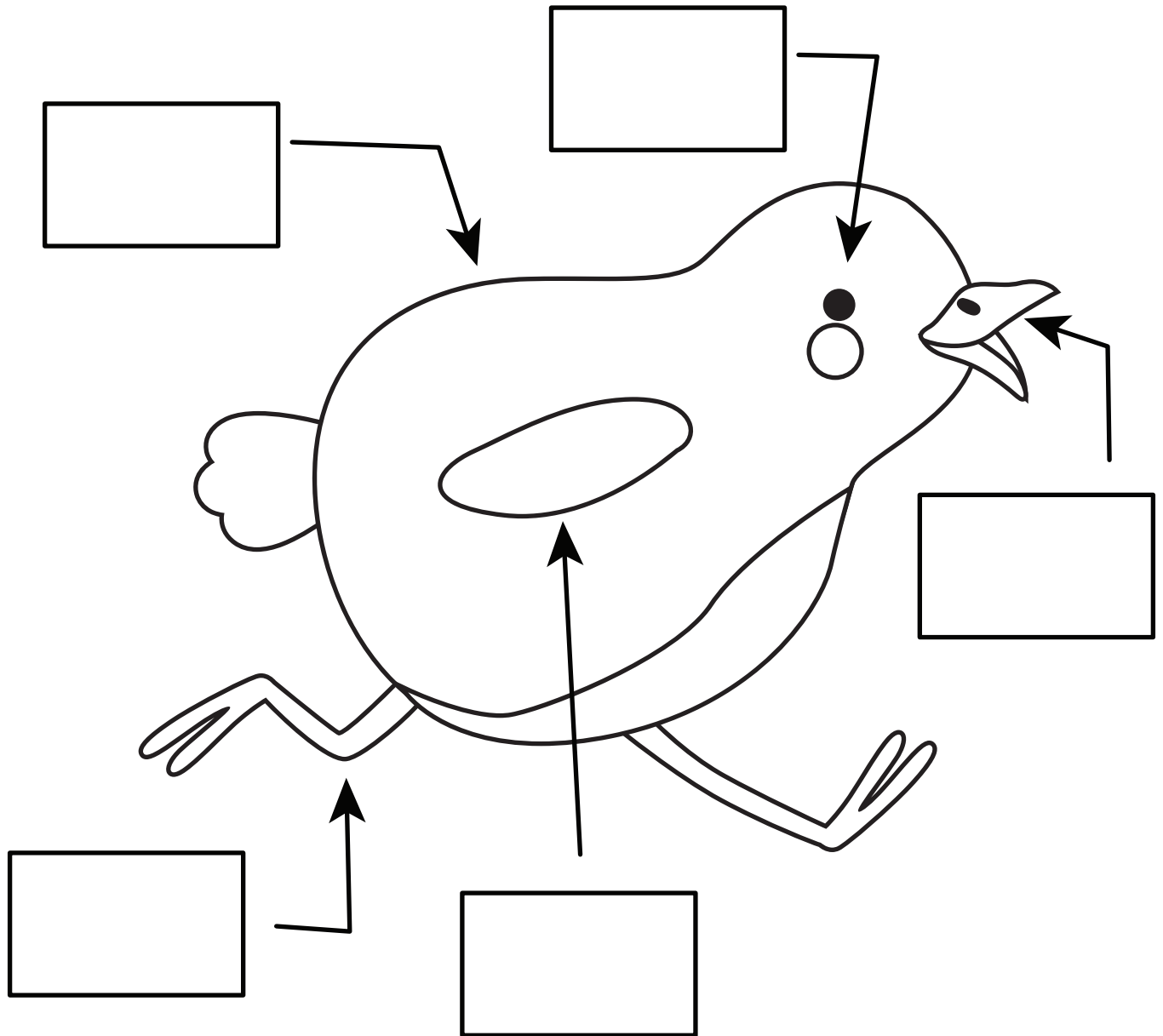
Start

C	f	n	m	j	s	I	k
c	p	t	t	K	i	k	o
c	i	w	U	r	O	z	s
c	C	c	C	h	v	u	X
E	j	G	C	C	c	C	c
L	k	a	e	P	d	V	C
x	W	z	q	y	o	s	C
H	u	i	Z	x	l	d	c

Name: \_\_\_\_\_

# Label The Chick

Cut out the rectangles below and glue them in the correct spot.



wing	beak	eye	leg	body
------	------	-----	-----	------

Cc



Cc is for chick.

chick

C C C C C

c c c c c

Cc Cc Cc